

# AMANO



Tsukui Facility  
in JAPAN

Watchman's  
Time Recorder

# PR 600

DURBLE QUARTZ TIME BASE WITH DATE IMPRINT

ASSURES ACCURATE AND CLEAR REGISTRATION OF WATCHMAN  
PATROL RECORDS FOR PROPERTY AND FACILITY SECURITY  
FROM FIRE AND BURGLARY.



**THE WATCHMAN HAS THE ABILITY TO FIND OUT THE DELICATE AND ABNORMAL PHENOMENON WHICH EVEN SOPHISTICATED SYSTEM MISSES.**

Amano Watchman's Time Recorder PR-600 accurately records when, where, who checked your security and at the same time, proves the honest work of watchman.

Your security is guaranteed by the honest work of watchman and the continuous check of the record by which your property is prevented from unforeseeable accident such as fire and burglary, and other incidents.

It is already proved by the date of insurance company that accident at the firms using watchman's time recorder are lower than average, and in some country the lower rate of premium is applied for the firms using watchman's time recorder.



**HOW TO USE PR-600**

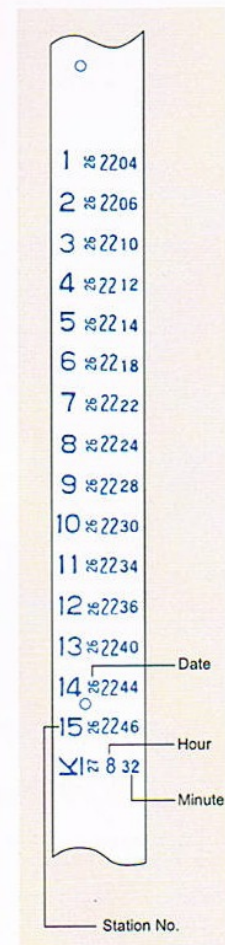
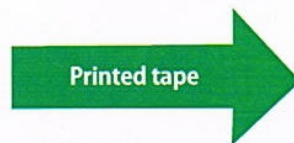
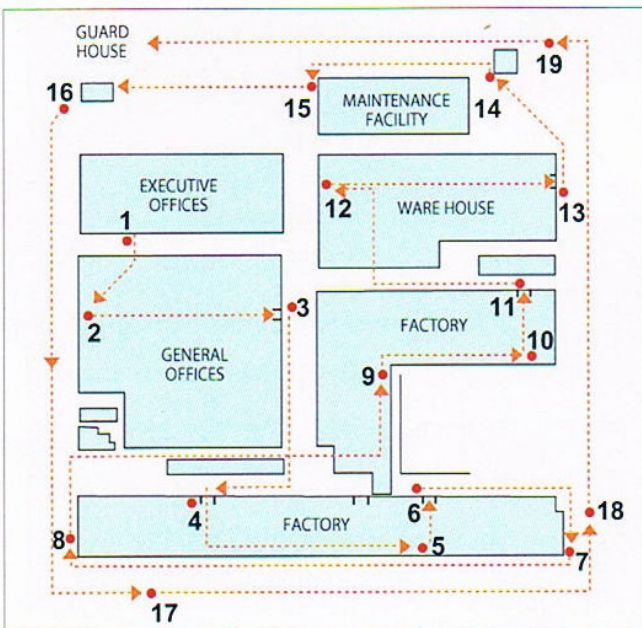
The watchman carries watchman's time recorder PR-600 with him to each check point.

When he arrives at each check point, he takes the station numbered key out of the station key box installed at the point and records the checking time by inserting and turning the station key in the PR-600 watchman's time recorder. Thus the station NO., Date, Hour and Minute are recorded in plain figures on the record paper tape.

Prior to each patrol, each watchman may register individual watchman's No. (for example: No.60, 70, 80) on the record tape, so that it will identify who patrolled what station.

It is effective for the security if the patrol course is changed time to time.

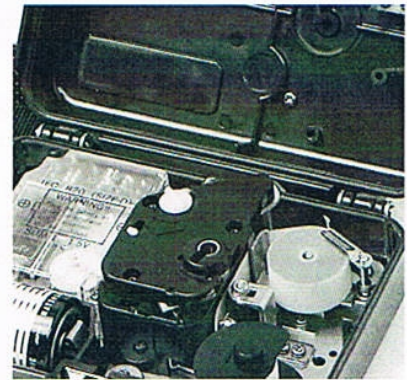
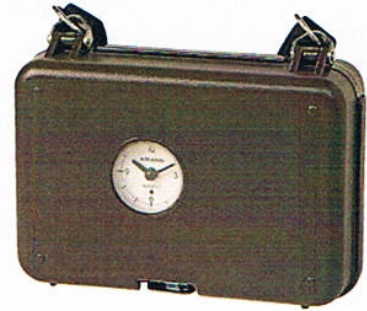
**WATCHMAN'S SAMPLE ROUTING MAP**



## FEATURE

- \* The first electronic watchman' s time recorder introduced in the world and keeps extremely accurate time by quartz time base.
- \* Regular dry cell battery can operates for at least 6 months,(No need to wind a spring regularly.) The light on the clock face indicates when the battery must be replaced.
- \* Shock absorber equipped in the machine to absorb the shock from possible mishandling.
- \* The length of the record tape: 12M per 1 roll. 2,000 imprints available.
- \* Clear imprint on the record tape. Easy to read.
- \* No inked ribbon used.
- \* With clock face - easy to read the time.
- \* Portable - easy to carry, and the cover case is made from polycarbonate bearable even for 250 Kgs pressure.

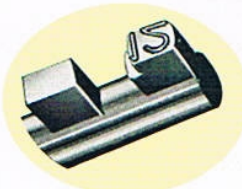
Dimensions : 170mm ( 6 <sup>3</sup>/<sub>16</sub>' ) [W] × 61mm ( 2 <sup>1</sup>/<sub>2</sub>' ) [D] × 118mm ( 4 <sup>3</sup>/<sub>16</sub>' ) [H]  
 Weight : 0.8kgs ( 1.76 lbs.)



## ACCESSORY



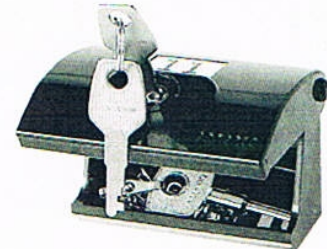
Station Key



- \* Station numbered key can be prepared from No.1-999 with chain to be installed in the station key box. You can choose your preferable numbered keys according to the layout of the premises and patrol schedule.
- \* The station box and a label to be stuck on the station box are prepared according to the number you need, and the station box with lock type protects from the lost of station key.



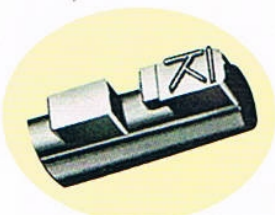
Station Key Box ( Without Lock )



Station Key Box ( With Lock )  
Key for Lock

### \* When ordering

1. Specify : Desired number for station and/or watchman' s No., such as No.1 - 45 , 60 , 70 and 80.
2. Specify : The quantities for each with and/or without lock type of station key box.
3. The number label to be stuck on the station box.



Master Key

Opening and closing of the machine for change of the record tape and time adjustment can be done only by using the master key which should be kept by supervisor or manager. Every time the case is opened or closed, a small dot is printed on the tape and when the case is opened by the master Key, a letter " K " is imprinted on the tape for tamperproof.

